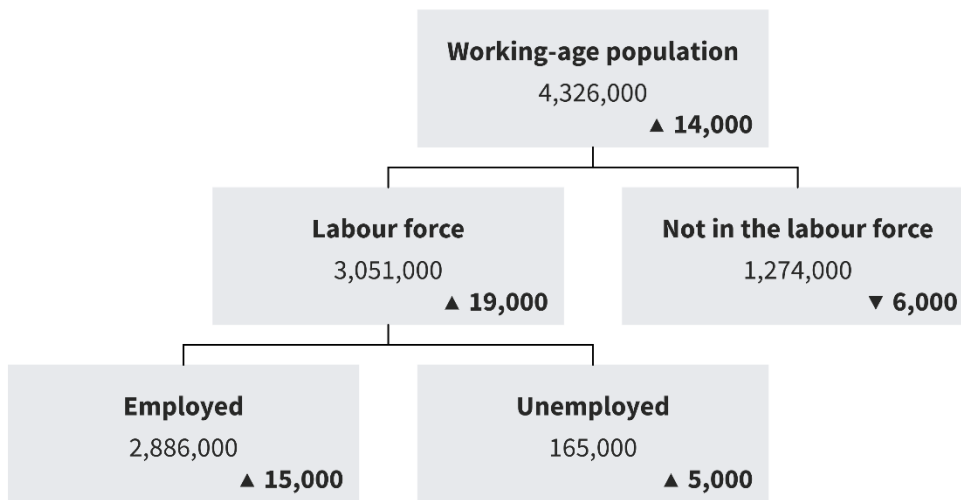


Labour market summary

December 2025 quarter, seasonally adjusted⁽¹⁾⁽²⁾⁽³⁾⁽⁴⁾⁽⁵⁾



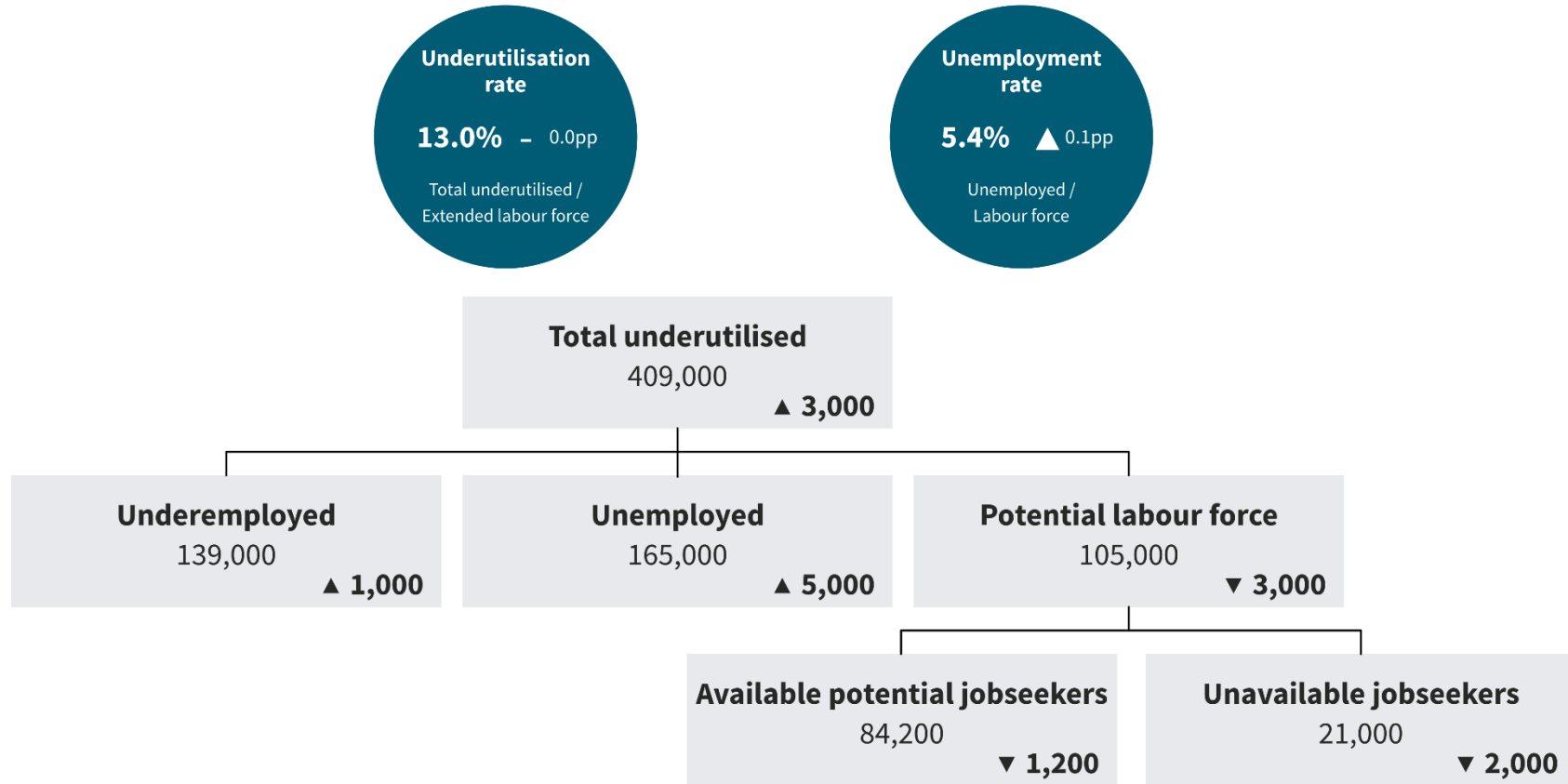
Footnotes:

1. Household Labour Force Survey data, unless otherwise stated.
2. Average ordinary time hourly earnings, annual wage inflation, and average weekly earnings are not seasonally adjusted.
3. Average weekly earnings includes ordinary time and overtime earnings for full-time equivalent employees.
4. Changes in seasonally adjusted data are quarterly.
5. Due to rounding, changes do not always sum to the published totals.

Source: Stats NZ, Household Labour Force Survey, Quarterly Employment Survey, Labour Cost Survey

Total underutilisation

December 2025 quarter, seasonally adjusted⁽¹⁾⁽²⁾⁽³⁾



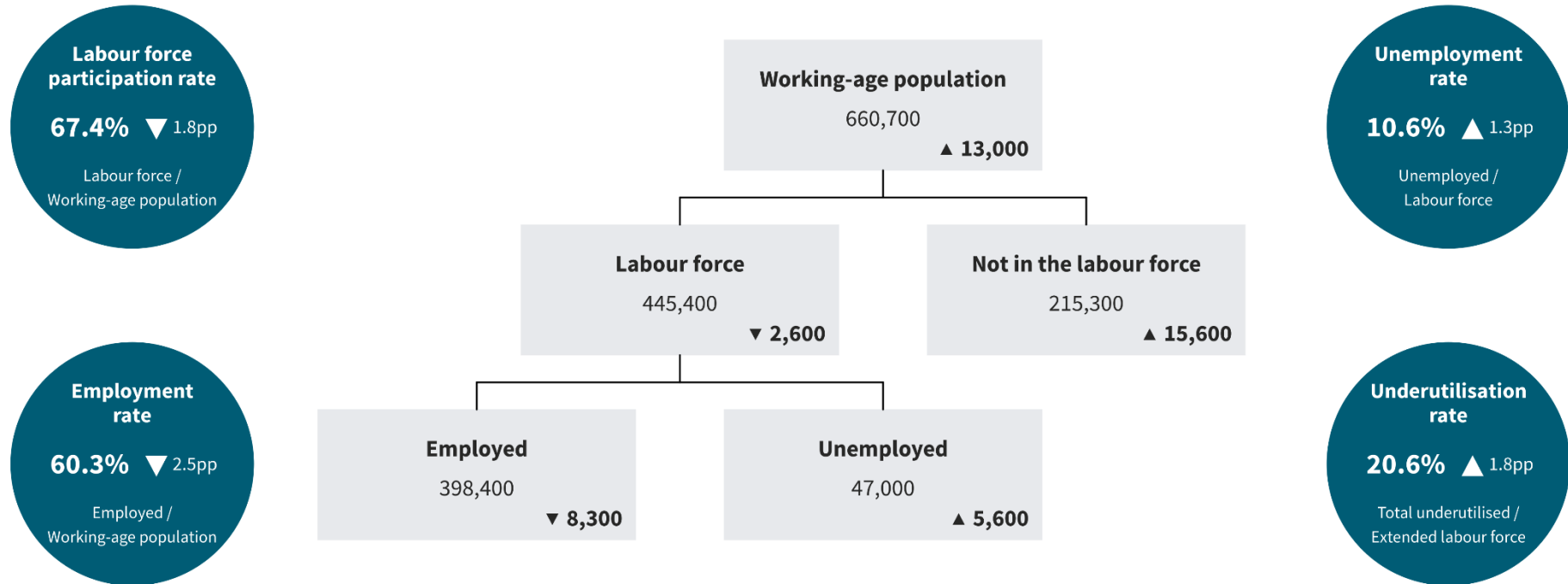
Footnotes:

1. No seasonal pattern is evident for available potential jobseekers. Therefore, this series is not seasonally adjusted.
2. Due to rounding, changes do not always sum to the published totals.
3. All changes are quarterly.

Source: Stats NZ, Household Labour Force Survey

Labour market summary – Māori

December 2025 annual average⁽¹⁾⁽²⁾⁽³⁾



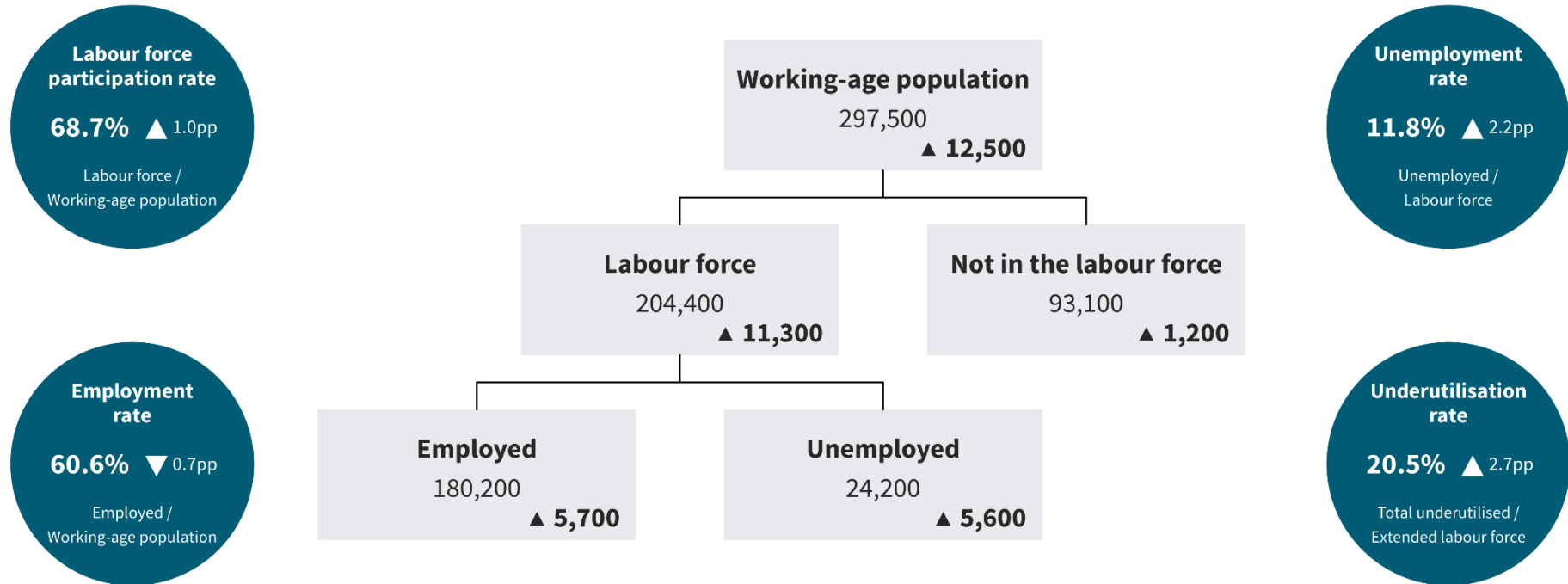
Footnotes:

1. Estimates are not seasonally adjusted, and are therefore presented as annual averages ending with the current quarter. Changes are from the previous year's annual average.
2. Changes in labour force and employed levels are not statistically significant. Other changes are statistically significant because they are greater than the sampling error.
Note that the change in the working-age population is always significant as one of our benchmarked measures.
3. Due to rounding, changes do not always sum to the published totals.

Source: Stats NZ, Household Labour Force Survey

Labour market summary – Pacific peoples

December 2025 annual average⁽¹⁾⁽²⁾⁽³⁾



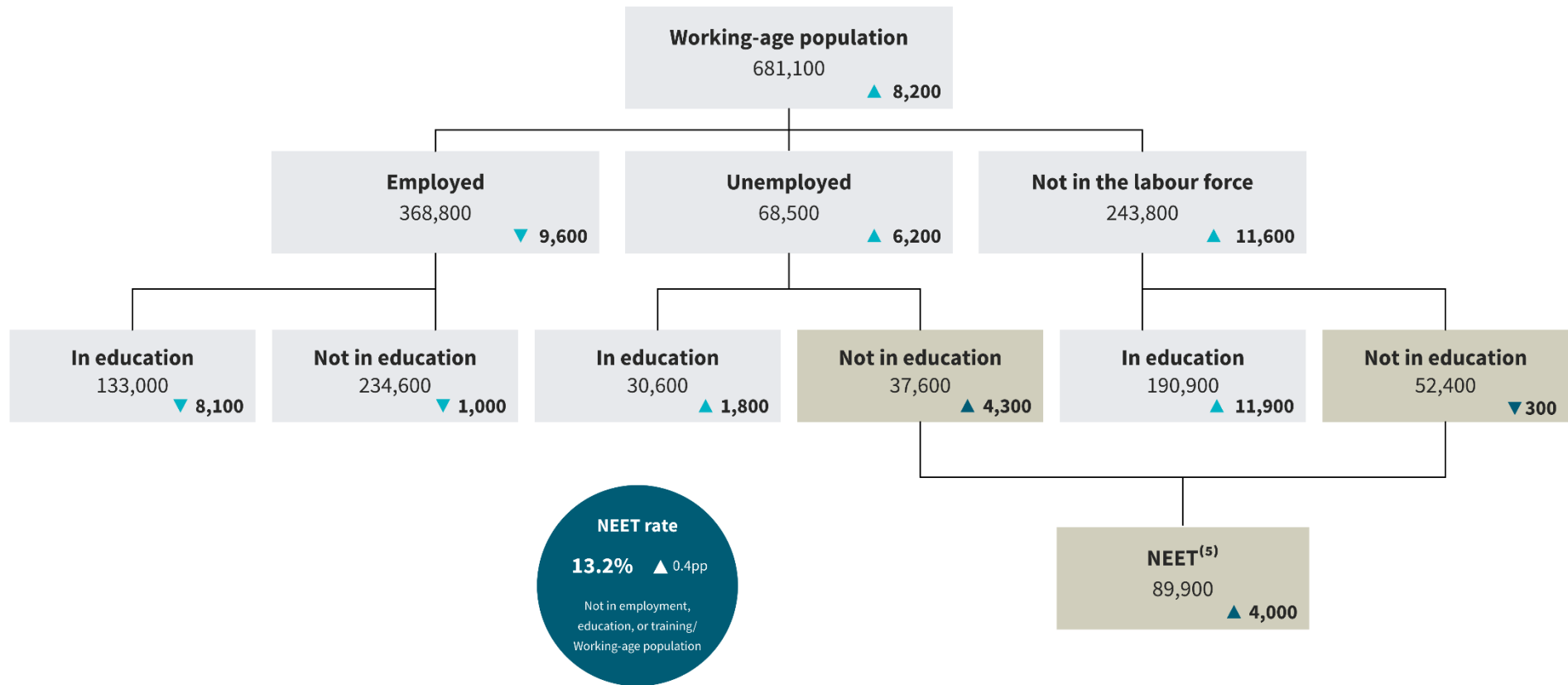
Footnotes:

1. Estimates are not seasonally adjusted, and are therefore presented as annual averages ending with the current quarter. Changes are from the previous year's annual average.
2. Changes in unemployed levels are statistically significant, as are changes in unemployment and underutilisation rates. Other changes are not statistically significant because they are less than the sampling error. Note that Pacific peoples' working-age population is not benchmarked.
3. Due to rounding, changes do not always sum to the published totals.

Source: Stats NZ, Household Labour Force Survey

Labour force and education status of people aged 15 to 24 years

December 2025 annual average⁽¹⁾⁽²⁾⁽³⁾⁽⁴⁾⁽⁵⁾



Footnotes:

1. Estimates are not seasonally adjusted, and therefore presented as annual averages ending with the current quarter. Changes are from the previous year's annual average.
2. Changes in working age population; employed; unemployed; not in the labour force; unemployed – not in education; and not in the labour force – in education are statistically significant. Other changes are not statistically significant because they are less than the sampling error. The change in the working-age population will always be significant as one of our benchmarked measures.
3. Those who have not specified an education status are included in the totals only.
4. Due to rounding and exclusion of not-specified groups, changes will not always sum to the published totals.
5. NEET refers to those people aged 15–24 years not in employment, education, or training.

Source: Stats NZ, Household Labour Force Survey